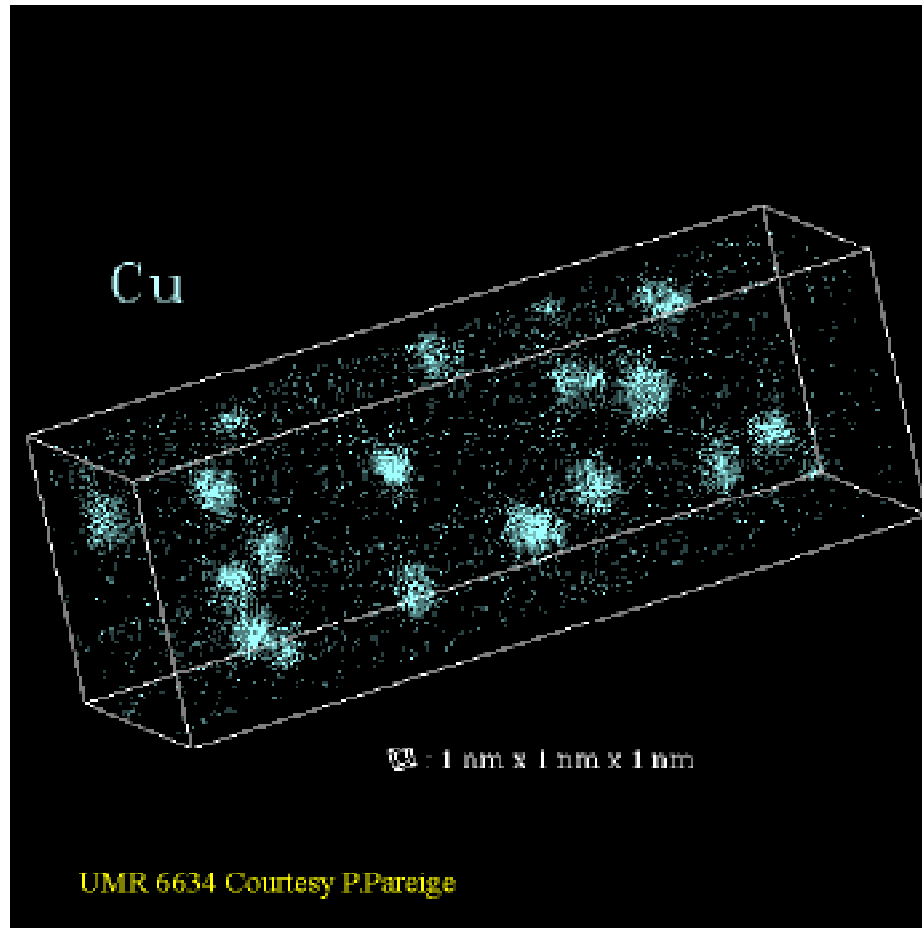


# Iron Copper alloy

CAMECA



Precipitation of copper enriched particles in a neutron irradiated Fe-1.4%Cu alloy ( $5.5 \cdot 10^{19} \text{ ncm}^{-2}$ ,  $E > 1 \text{ MeV}$ ,  $T = 563 \text{ K}$ )

Each dots gives the position of a copper atom within the probed volume ( $16 \times 16 \times 46 \text{ nm}^3$ ).

Particules are less than 2 nm in diameter. Their number density is close to  $1 \cdot 10^{18} \text{ cm}^{-3}$ .

**Tomographic Atom Probe**